

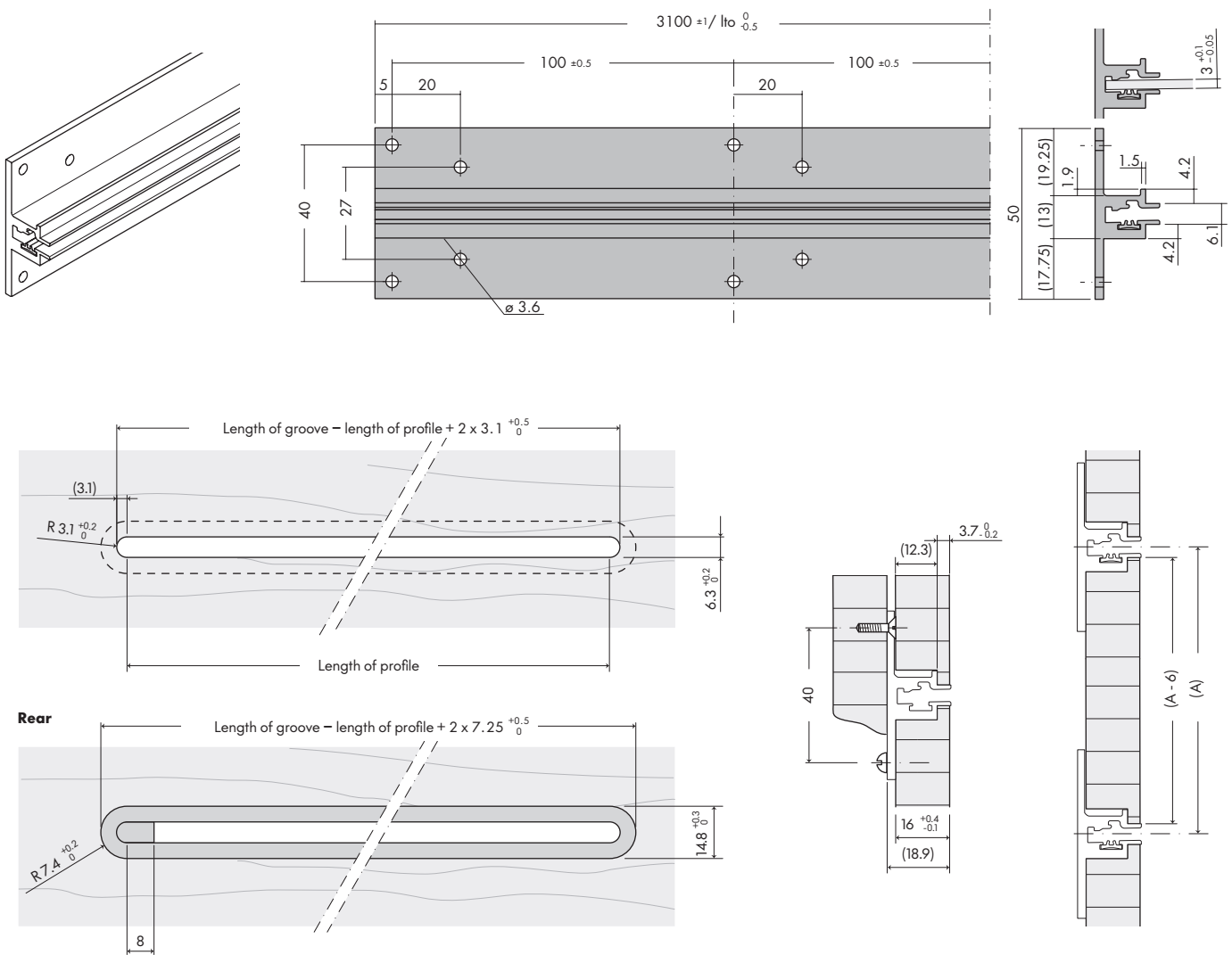
Invisible 3

Assembly and operating instructions

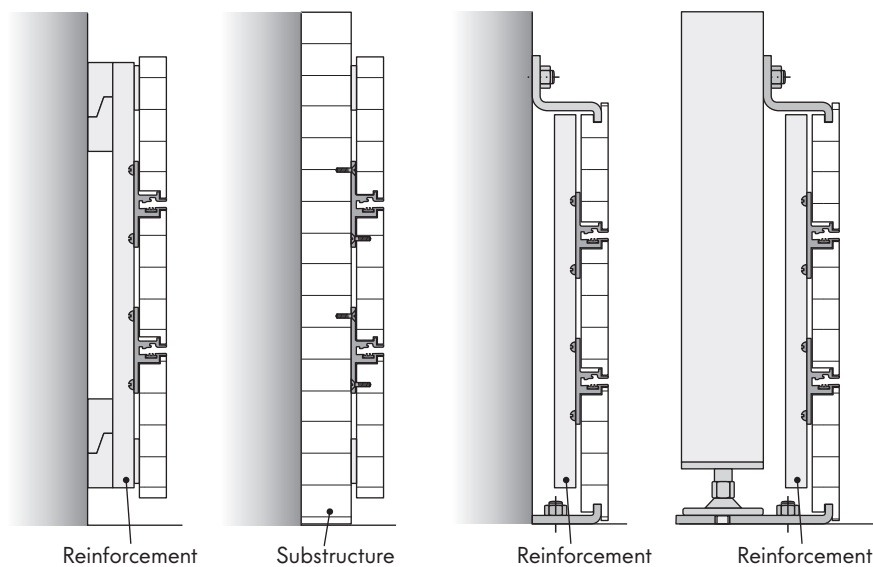
visplay

play it smart

Assembly dimensions / Layout - Invisible 3 profile for 16 mm wooden panel



Examples of fixation



1 Layout
Panels and sub-structures must be toughened against bowing. Wooden ledges or angle sections are suitable for this purpose.

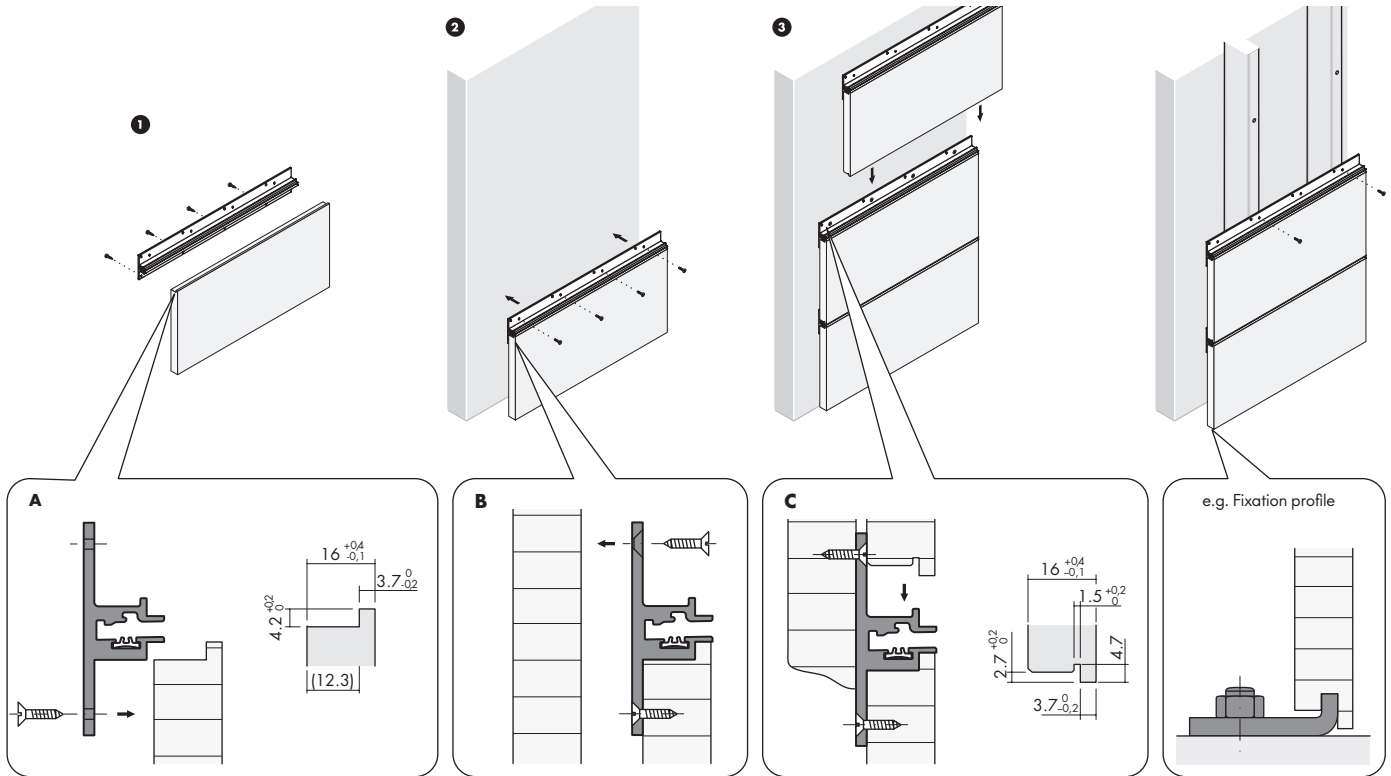
Assembly instructions

The following steps must be carried out when assembling the Invisible 3 profile for 16 mm wooden panel:

1. Screw first profile to the lowest panel from the rear using 3.5 x 15 mm wood screws - see »A« for edge contour.
2. Screw pre-mounted panel to substructure from the front. The indicated bore holes must be countersunk in the profile. The profile is screwed to the substructure using countersunk screws - see »B«.
3. All further profiles are to be pre-assembled according to steps 1 and 2, fitted to the lower profile and screwed together. See »C« for bottom panel groove.

Assembled directly onto the wall

Assembled onto substructure

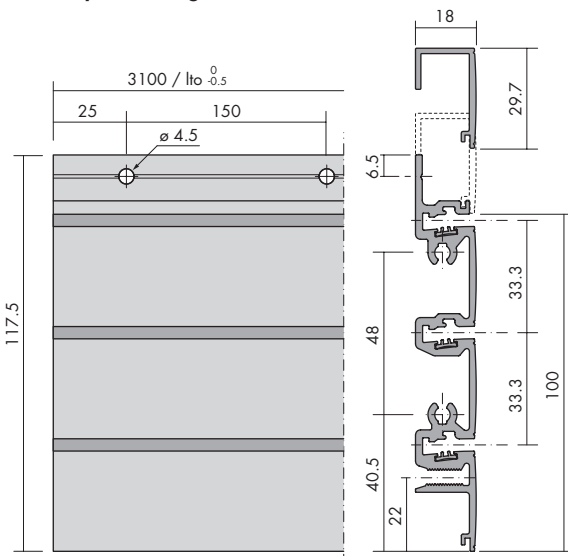


Assembly dimensions / Layout - Invisible 3 profile single sided and double sided

Invisible 3 profiles are available in two different versions:

- Single sided (18 mm) assembled on wooden panels
- Double sided (34 mm) assembled between profile frames (min. 35 mm)

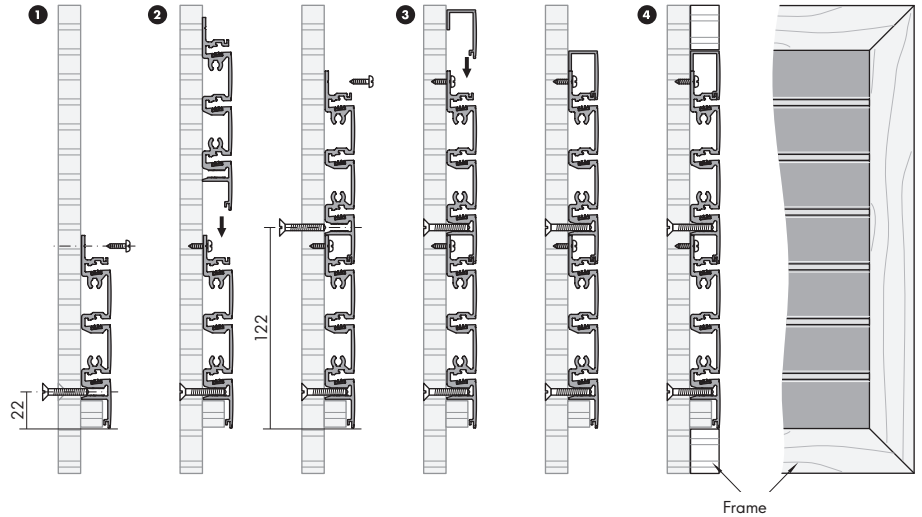
Invisible 3 profile single sided



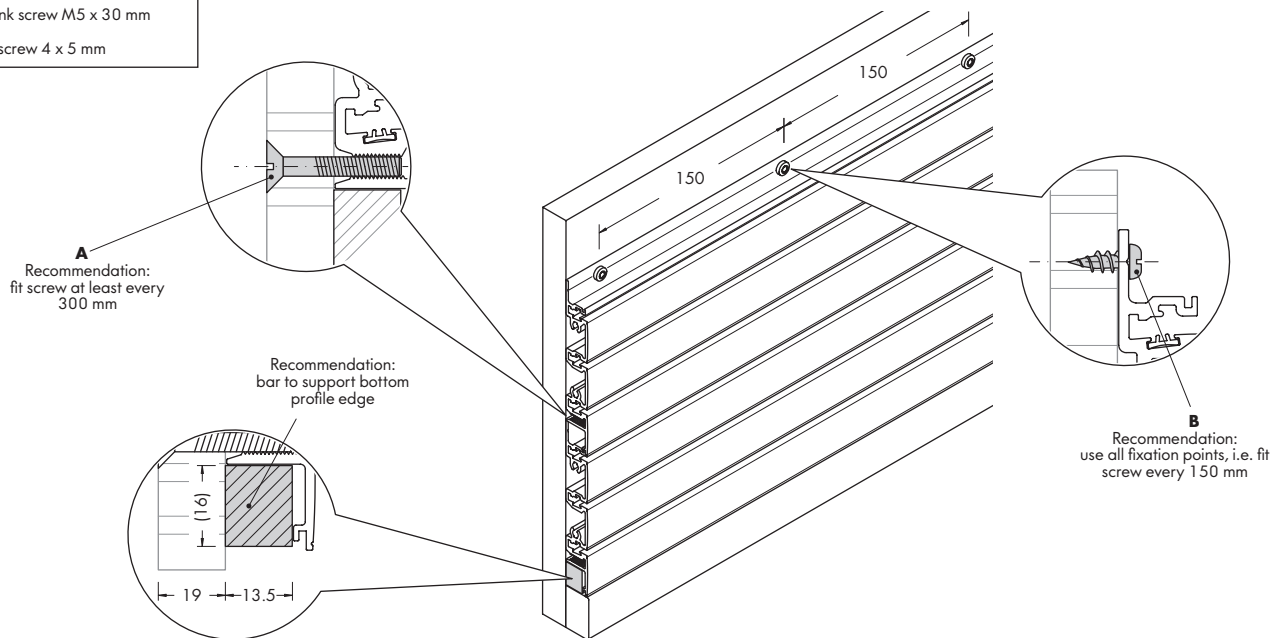
Assembly instructions Invisible 3 profile panels one-sided

The following steps must be carried out when assembling a one-sided profile:

1. Screw the lowest profile to the wooden panel (min. 16 mm) from the front using a 4 x 15 mm screw and from the rear using a M5 x 20 mm screw.
2. Insert a profile into the top of the bottom profile - making sure that the profile is correctly locked into place - and screw to the wooden panel with 4 x 15 mm screw.
3. Insert Invisible 3 end profile - making sure that the profile is securely locked in place.
4. Screw frame to support panel.

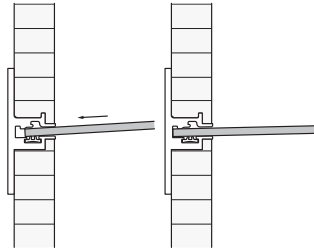


- A** Countersunk screw M5 x 30 mm
- B** Pan-head screw 4 x 5 mm



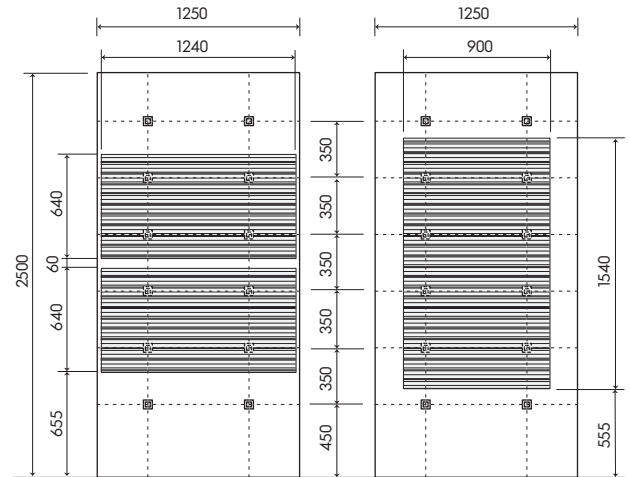
Instructions of use

The Invisible accessories/shelves are inserted in to the holders or profile at a slight angle until the limit stop is reached. Then lower the accessory/shelf. Check that the accessory is correctly clicked into the profile.



Invisible 3 panel (one-sided)

Panel with aluminium frame, to be attached with fixing set (4 fixing sets per panel are required).



Weight loading

i The indicated weight loads are always based on the total weights of the merchandise support and goods. Please observe that max. weight loading decreases as the merchandise support increases in length. Please observe that the inclination of the merchandise support changes with an increase in load. Different weights on the merchandise supports produce an uneven overall appearance of the goods display. The max. weight loading of Invisible 3 depends on the nature of the wall, on the number of fixation points as well as on the fixation material used. All fixation points are to be used with a maximum weight load. Please also observe the weight loads indicated in our sales documentation.

Max. load

| | | |
|-------------------------------|-----------------------------------|-------|
| Profile | per 625 mm | 12 kg |
| Profile panels one-sided | per 625 mm split over all grooves | 12 kg |
| Front arms Ø 8 mm | | 4 kg |
| Side hanging frame Ø 15 mm | | 8 kg |
| Hooks Ø 6 mm | | 1 kg |
| Hooks Ø 4 mm | | 1 kg |
| Looped hooks Ø 4 mm | | 3 kg |
| Glasses holder | | 1 kg |
| Clamp bracket for glass shelf | per bracket | 4 kg |

visplay

www.visplay.com

info@visplay.com